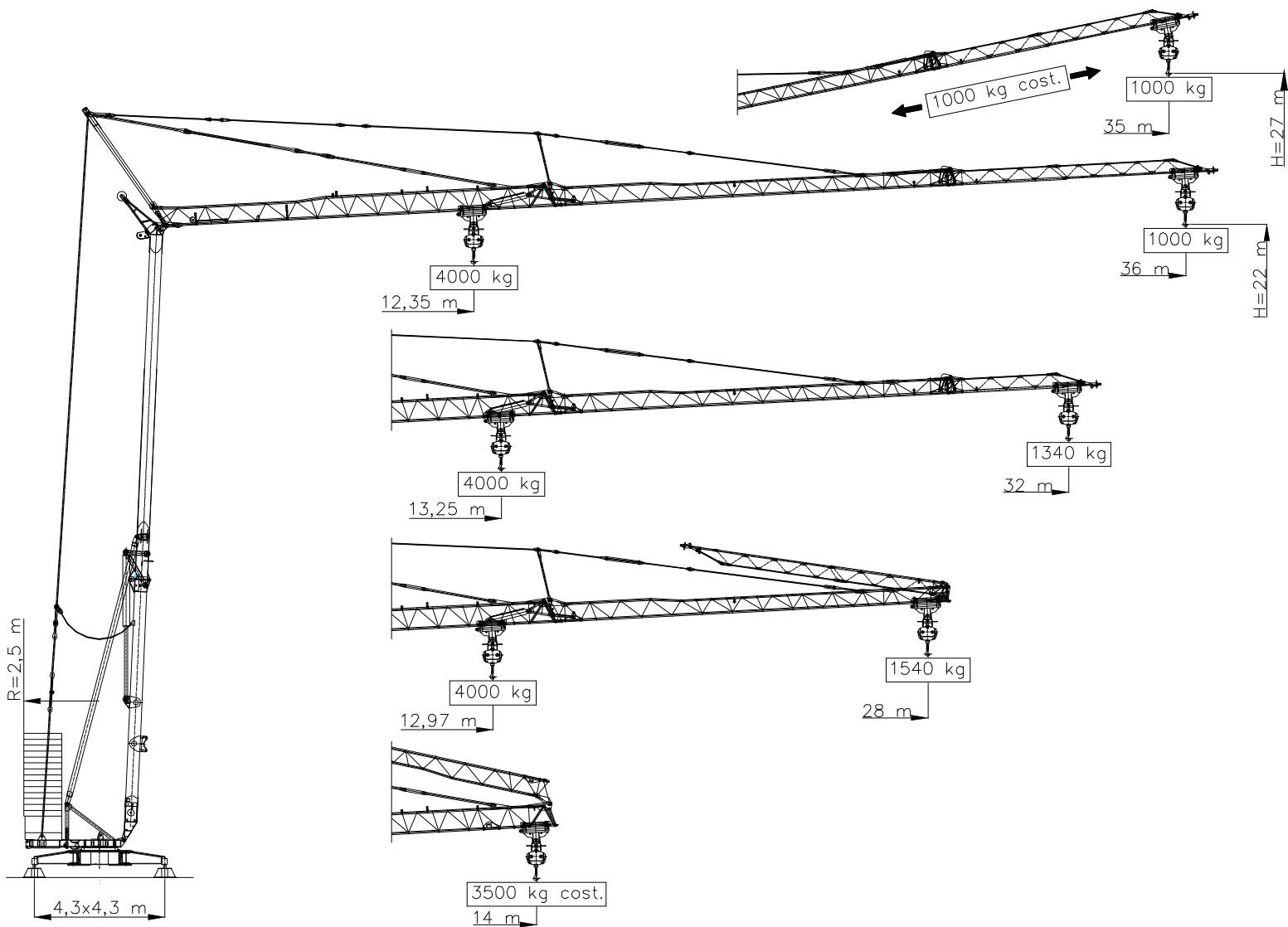




MaSol S.R.L.®
MACCHINE SOLLEVAMENTO

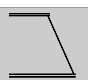


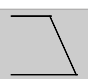
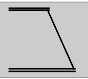
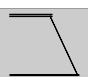
H.S. 36.10



MA.SOL. s.r.l.

Stabilimento ed uffici: via Buonarroti 26/3 26024 Paderno Ponchielli (CR) Italy - Mecc. Estero CR 010071
Tel.: +39 0374 367098 - Fax: +39 0374 367128 - E-mail: info@masol.it - Web: www.masol.it

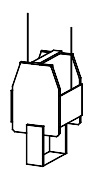

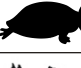

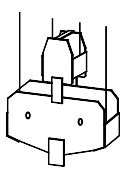

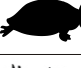

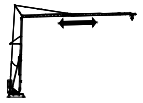
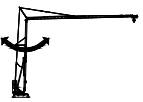
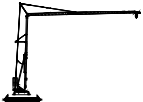

Courbes de charges - Lastkurven - Load curves - Curve di carico

36 m														m		
		12,35	14	16	18	20	21,37	22	24	26	28	30	32		34	36
		4000	3408	2878	2483	2177	2000	1930	1735	1572	1435	1318	1217	1127	1000	kg
32 m														m		
		13,25	14	16	18	20	22	23,06	24	26	28	30	32			
		4000	3730	3153	2724	2390	2123	2000	1906	1729	1580	1452	1340		kg	
28 m											m					
		12,97	14	16	18	20	22,55	24	26	28						
		4000	3635	3075	2655	2330	2000	1860	1685	1540				kg		
14 m													3500 kg - cost.			

Flèche relevée - Ausleger in Steinstellung
Luffing jib - Braccio impennato

1000 kg - cost.

Mécanismes - Antriebe Mechanisms - Meccanismi

			m/min	kg	CV-PS hp	kw
Levage - Variateur Heben - Unrichter Hoisting - Speed Controller Sollevamento - Variatore (Inverter)			6	2000	14	10,3
			24	2000		
			48	1000		
			3	4000	14	10,3
			12	4000		
			24	2000		
Distribution (Variateur) - Katzfahren (Unrichter) Trolleying (Speed Controller) - Carrello (Variatore)			20 40		4	3
Orientation (Variateur) - Schwenken (Unrichter) Slewing (Speed Controller) - Rotazione (Variatore)			0,2 0,6 1,1 rpm - g/min		4,5 daNm	
Translation - Kranfahren Travelling - Traslazione			30		1,5x n°2	1,1x n°2
Puissance électrique nécessaire - Anschlusswert Necessary electric power Potenza elettrica necessaria	380 V 50 hz 	Réseau - Netzstrom Mains supply - Potenza			20 kw	
		Groupe électrogène Stromaggregat - Generator set Gruppo elettrogeno			Nous consulter Auf Anfrage - Consult us Consultarci	

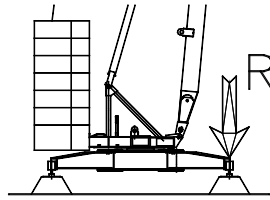
Poids de construction sans essieux - Konstruktionsgewicht ohne Transportachse
Dead weight without transport axles - Peso della gru senza assali

14800 kg

Poids du lest - Ballastgewicht - Ballast weight - Peso zavorra rotante

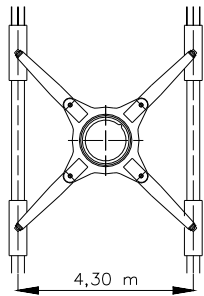
26500 kg

Réactions - Eckdrucke - Reactions - Reazioni

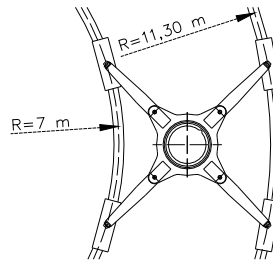


R ● 24800 daN ■ 20900 daN

● En service	● In Betrieb	● In service	● In servizio
■ Pas en service	■ Ausser Betrieb	■ Out of service	■ Fuori servizio

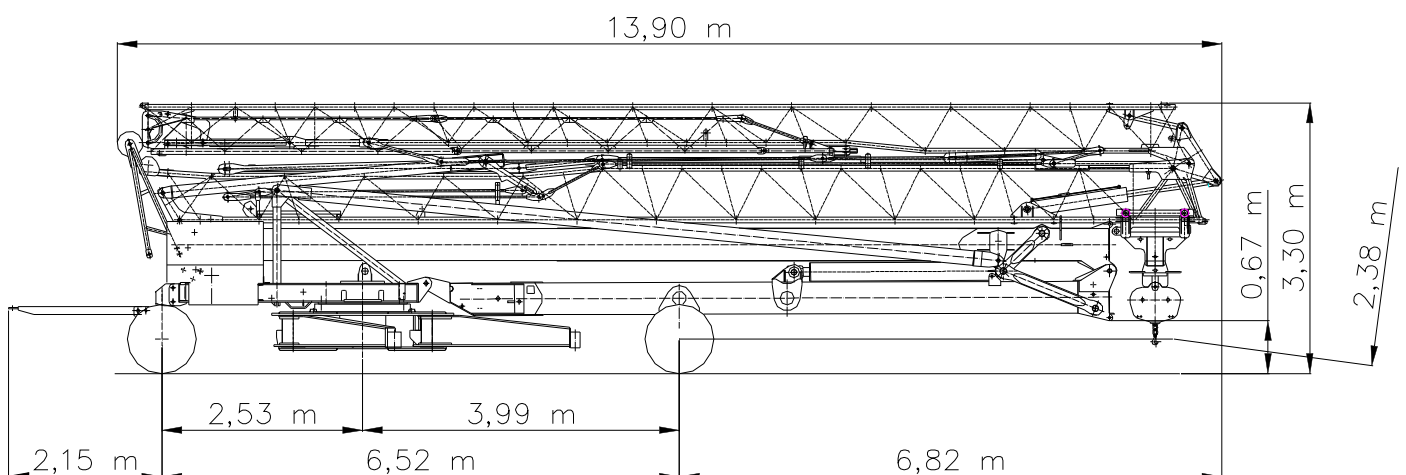


Version voie droite
Ausführung gerade Schienenbahn
Straight track version
Versione traslazione diritta



Version voie courbe
Ausführung kurven Schienenbahn
Curved track version
Versione traslazione curva

Mode de transport - Transportart - Kind of transport - Soluzione di traino



Montage - Montage - Erection - Montaggio

